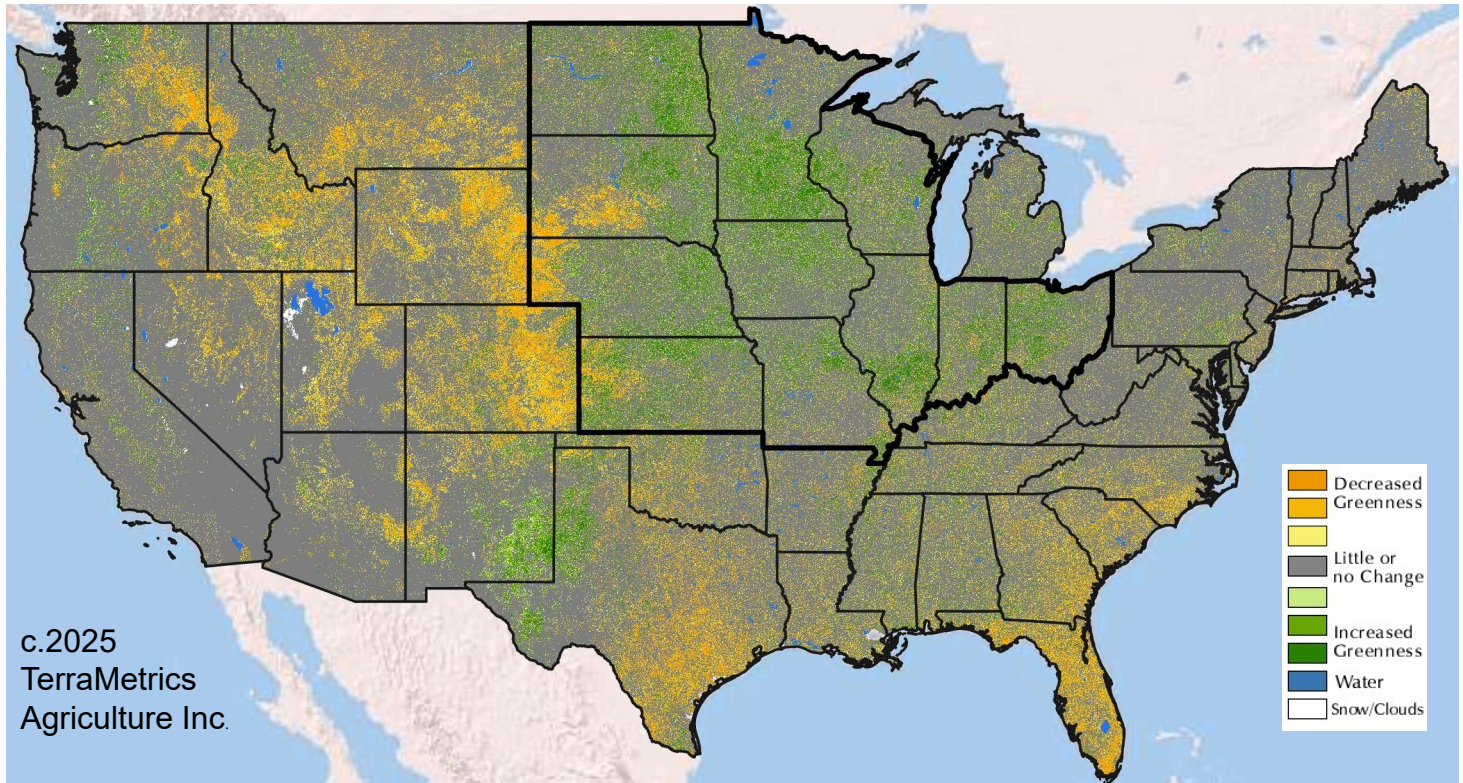
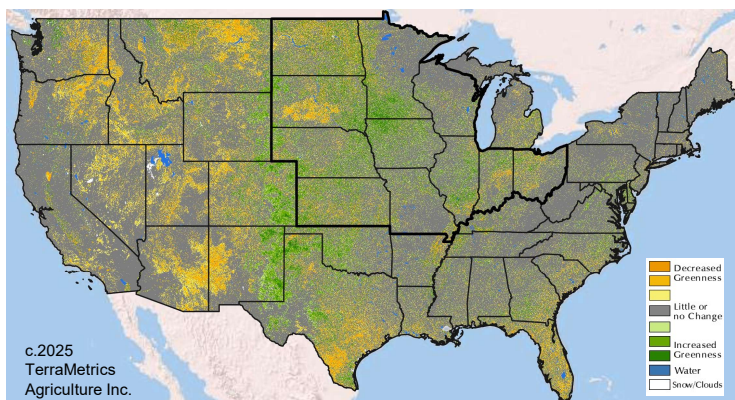


### CHANGES in GREENNESS from Last Period

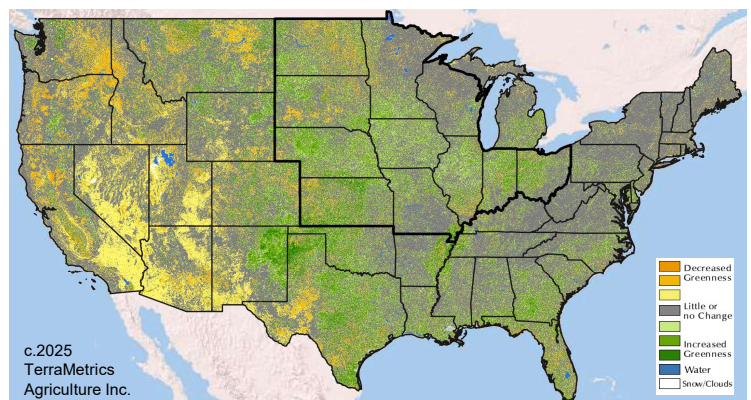
Issued: July 9, 2025



### DIFFERENCE from LAST YEAR



### DIFFERENCE from AVERAGE



**CORN:** Satellite greenness values indicate a US corn crop with near-trend yield potential. Most corn fields across the Midwest received 0.5-2+ inches of rainfall over the last two weeks, providing a useful amount of maintenance moisture as the crop is nearing peak vegetation.

**SOYBEANS:** Our latest satellite greenness-based estimate for the 2025 US soybean crop increased 0.2 bu/ac from two weeks ago. USDA reported that 96% of the national crop had emerged with 32% blooming. The Mississippi River Delta region is well ahead of the Midwest.

\* Source: TerraMetrics Ag's Corn and Soybean Yield Forecasts



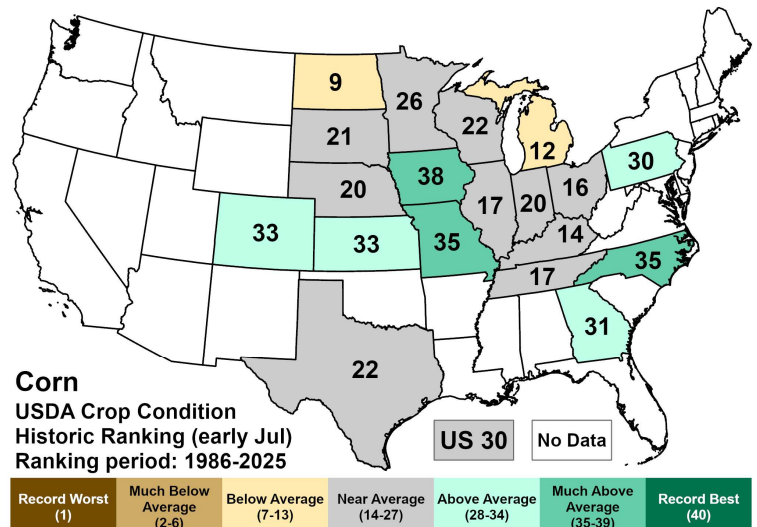
### USDA CORN CROP CONDITIONS

**Week of July 6, 2025**

The table below contains crop condition percentages from the most recent state-level USDA crop progress reports released 7/7/25 for the top-10 corn states. For comparison, values from 6/30/25 are shown in parentheses.

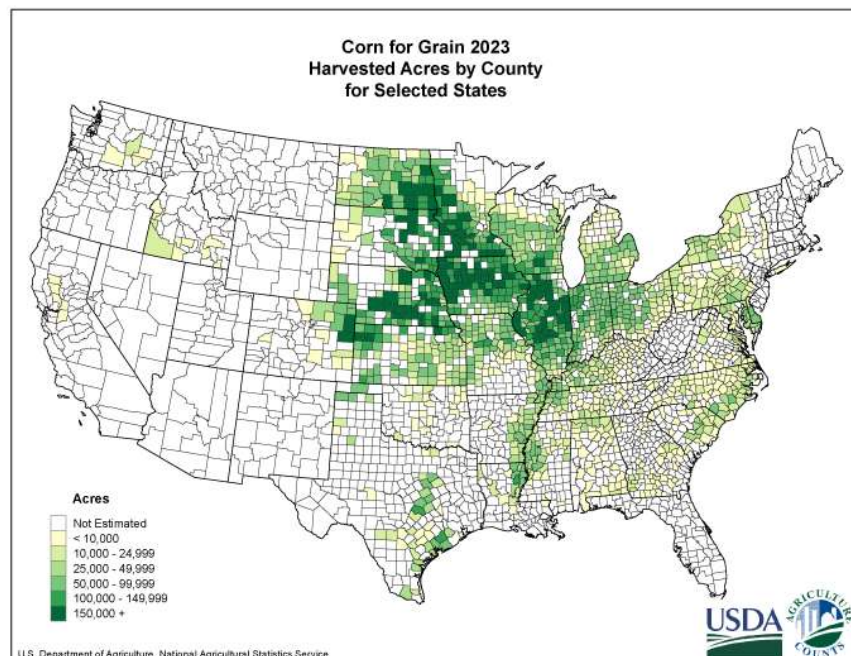
"Historic Rank" was determined by compiling nearby condition rating since the mid-1980s and evaluating how the latest 2025 condition ratings stack up.

State	VP-P	F	G-E	Historic Rank* {previous**} current
IA	2 (2)	12 (13)	86 (85)	{37-34-36} 38
IL	10 (8)	22 (21)	68 (71)	{21-25-22} 17
NE	4 (3)	21 (20)	75 (77)	{19-12-22} 20
MN	6 (5)	20 (21)	74 (74)	{27-27-28} 26
IN	11 (10)	26 (28)	63 (62)	{20-22-17} 20
SD	4 (5)	24 (25)	72 (70)	{10-9-17} 21
KS	6 (8)	22 (26)	72 (66)	{25-21-20} 33
OH	6 (7)	37 (32)	57 (61)	{16-20-16} 16
MO	6 (6)	20 (20)	74 (74)	{36-33-33} 35
WI	4 (4)	19 (21)	77 (75)	{15-22-19} 22
US	5 (5)	21 (22)	74 (73)	{26-22-27} 30



\* 1 = worst, 40 = best

\*\* {3 weeks ago – 2 weeks ago – last week}

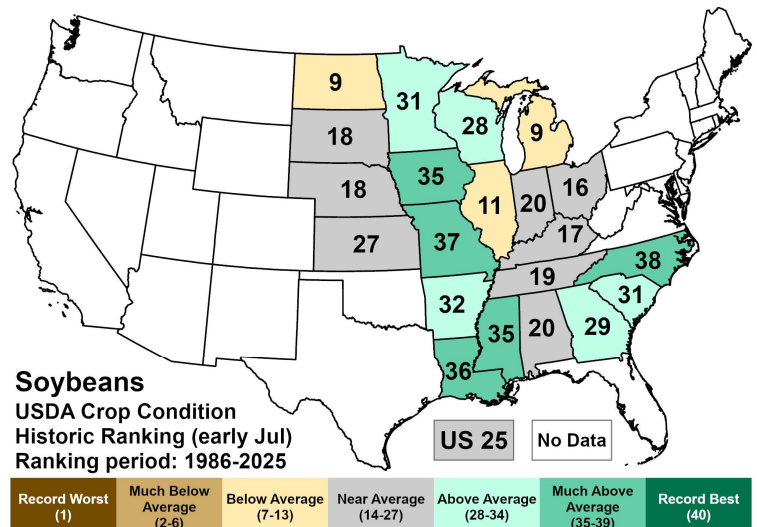


### USDA SOYBEAN CROP CONDITIONS Week of July 6, 2025

The table below contains crop condition percentages from the most recent state-level USDA crop progress reports released 7/7/25 for the top-10 soybean states. For comparison, values from 6/30/25 are shown in parentheses.

"Historic Rank" was determined by compiling nearby condition rating since the mid-1980s and evaluating how the latest 2025 condition ratings stack up.

State	VP-P	F	G-E	Historic Rank* {previous**} current
IL	13 (13)	33 (33)	54 (54)	{16-18-11} 11
IA	3 (4)	18 (19)	79 (77)	{35-29-30} 35
MN	6 (5)	21 (22)	73 (73)	{26-30-31} 31
IN	10 (11)	28 (28)	62 (61)	{22-25-17} 20
NE	4 (4)	25 (28)	71 (68)	{18-9-16} 18
MO	3 (4)	24 (24)	73 (72)	{40-37-38} 37
SD	6 (9)	26 (26)	68 (65)	{9-10-13} 18
OH	6 (6)	40 (35)	54 (59)	{13-20-21} 16
ND	10 (11)	34 (32)	56 (57)	{7-6-7} 9
KS	4 (5)	23 (28)	73 (67)	{8-14-20} 27
US	7 (7)	27 (27)	66 (66)	{20-24-22} 25



\* 1 = worst, 40 = best

\*\* {3 weeks ago – 2 weeks ago – last week}

